

Sustainability FAQ.

All Brett Certificates, EPD's & Policies can be found on our website.
brettlandscaping.co.uk/sustainability

Environmental.

Climate Change.

Does Brett monitor the carbon emissions it is producing?
Is this publicly disclosed?

Yes. This is included in our Annual Sustainability reports which are available on our website.

What initiatives and actions are Brett taking to reduce emissions?

The three focus areas are Packaging reduction/recycled content, Renewable energy & Carbon friendly materials for our products.

Does Brett have a Net-Zero target aligned with Science Based Targets?

We do have Net Zero targets, but they are not aligned with science based targets.

Does Brett have a publicly available response to the recommendations of the Task Force on Climate-related Financial Disclosures (TCFD)?

No.

Sustainability FAQ.

All Brett Certificates, EPD's & Policies can be found on our website.
brettlandscaping.co.uk/sustainability

Environmental.

Energy.

Does Brett operate an Energy Management System?	Yes. This is monitored via our Internal 'Measuring up Management' system data.
Is it accredited to ISO 50001?	No
What initiatives and actions is Brett taking to reduce energy use?	Renewable energy projects & Energy Efficiency projects.
Does Brett produce any renewable energy? Is it Renewable Energy Guarantee of Origin (REGO) backed?	Yes.
Does Brett have any renewable energy generation installed or proposed in its operations?	Yes. We have solar panels installed at our Kent plant.

Sustainability FAQ.

All Brett Certificates, EPD's & Policies can be found on our website.
brettlandscaping.co.uk/sustainability

Environmental.

Waste.

Is Brett monitoring the waste it is producing? Both in manufacturing and packaging?

Yes.

What initiatives and actions is Brett taking to reduce waste? Both in manufacturing and packaging?

We work towards a 'Right first time' ethos which is progressed via the Brett Landscaping & Building Products Quality Improvement plan.

Please provide detail on any takeback/closed loop schemes for offcut, damaged or surplus material and/or packaging?

We have started working with the Pallet Loop company to reuse our pallets that we supply our manufactured products on.

Environmental Management System.

Please provide detail on the Brett Environmental Management System (EMS).

SHE Policy.

Is the EMS certified to ISO 14001 or any other scheme?

Yes.

Sustainability FAQ.

All Brett Certificates, EPD's & Policies can be found on our website.
brettlandscaping.co.uk/sustainability

Environmental.

Environmental & Sustainability Policies and Targets.

Does Brett have an Environmental or Sustainability Policy?

Yes.

Does Brett publish other environmental or sustainability targets, including progress on these targets?

Yes, through our Annual Sustainability Report.

Material Packaging.

Is the packaging recyclable?

Yes.

What is the recycled content of the packaging?

The Brett Standard is 30% recycled content.

Does Brett plastic packaging contain a minimum of 30% recycled content?

Yes, as above.

Is Brett providing cardboard packaging, is it FSC/PEFC certified?

Not Applicable.

Sustainability FAQ.

All Brett Certificates, EPD's & Policies can be found on our website.
brettlandscaping.co.uk/sustainability

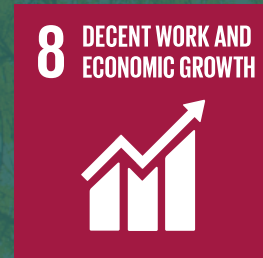
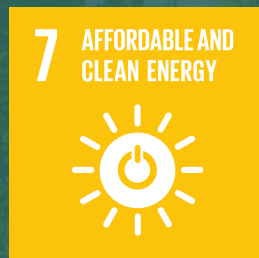
Strategy.

Sustainable Development Goals.

Does Brett align its business strategies to any of the UN Sustainable Development Goals?

Yes.

Goals for a better world.



Sustainability FAQ.

All Brett Certificates, EPD's & Policies can be found on our website.
brettlandscaping.co.uk/sustainability

Supply Chain.

Raw Material Inputs.

Has Brett mapped their supply chain?

Yes, covered via BES 6001 certification.

Responsible Sourcing.

Does Brett have a responsible sourcing policy?

Yes. This can be accessed in the downloads section of our website.

Is it certified to BES 6001?

Yes.

What initiatives and actions are Brett taking to ensure visibility of the upstream supply chain?

BES 6001 is published on our website at brettlandscaping.co.uk/download

Sustainability FAQ.

All Brett Certificates, EPD's & Policies can be found on our website.
brettlandscaping.co.uk/sustainability

Supply Chain.

Timber.

Does Brett have a sustainable timber policy for purchasing timber and paper-based products?	Not Applicable.
Does Brett hold Forestry Stewardship Council (FSC) membership?	Not Applicable.
Does Brett hold Programme for the Endorsement of Forest Certification (PEFC)?	Not Applicable.
Does Brett purchase FSC/PEFC certified timber?	Yes, Our pallet supplier, Scott's Timber are FSC Certified.

Sustainability FAQ.

All Brett Certificates, EPD's & Policies can be found on our website.
brettlandscaping.co.uk/sustainability

Diversity, Training & Development. Development.

Does Brett use any of the Supply Chain Sustainability Schools resources for any training needs?

No, we are reviewing the SCSS with a view to becoming a member.

Is Brett supporting skills, development, and apprenticeships?

Yes.

Carbon data & Carbon labelling. Environmental Product Declaration / Product Labelling.

Do Brett products hold an Environmental Product Declaration (EPD)?

Yes. We have a suite of EPD's that cover Brett products, Third Party verified by the EPD Hub.

Is Brett reviewing environmental/carbon labelling?

Yes.

What is the life cycle assessment range?

Cradle to gate with options.

Sustainability FAQ.

All Brett Certificates, EPD's & Policies can be found on our website.
brettlandscaping.co.uk/sustainability

Useful Links & Supporting Resources.

Brett Landscaping Website	Brettlandscaping.co.uk/sustainability
United Nations Sustainable Development Goals	sdgs.un.org/goals
Mineral Products Association, Precast	mpaprecast.org
The EPD Hub	epdhub.com
The Pallet Loop	thepalletloop.com
Scott Pallets	scottgrouppltd.com
BES 6001 Framework Standard for Responsible Sourcing	bregroup.com/services/standards
PermCalc. Permeable pavement solutions for SuDS applications.	permcalc.co.uk