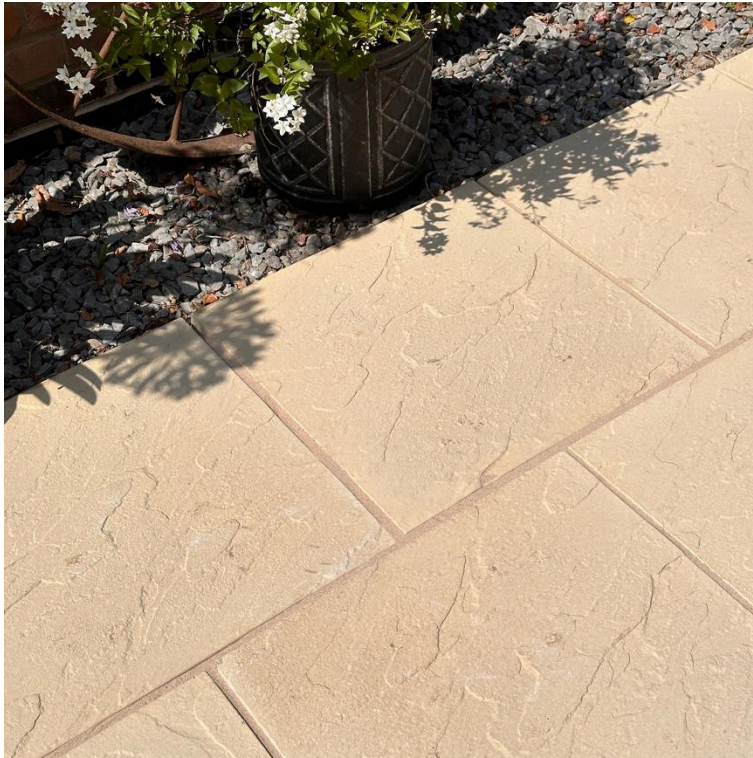


# Stamford & Stamford Ultra Concrete Flag Paving

## Technical Data Sheet



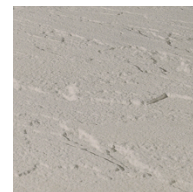
Buff Stamford



Buff Stamford



Buff Stamford Ultra



Charcoal Stamford



Charcoal Stamford Ultra



Natural Stamford



Natural Stamford Ultra

### Description

Offering eye-catching style with its defined riven surface and sloping edges, Brett's Stamford paving is a traditional wetcast utility paving. Stamford Ultra, a wet-cast utility paving features a gentle rippled surface texture which is ideal for softer more organic designs. Brett's Stamford and Stamford Ultra is ideal for a wide range of domestic utility applications.

### Application

Brett Stamford and Stamford Ultra can be used in a wide range of domestic utility applications. Not suitable for driveways.

<b>Product Type</b>	Precast concrete modular paving flag.
<b>Manufacturing Process</b>	Wet cast vibrated concrete paving flag.
<b>Manufacturing Standard</b>	BS EN 1339: 2003
<b>Design Standard</b>	BS 7533-101: 2021
<b>Installation Standard</b>	BS 7533-102: 2025
<b>UKCA/DOP</b>	Contact Brett for more information
<b>NBS Specification</b>	N/A

## Product Performance

Nominal Dimensions (mm)	Working Dimensions (mm)	No.per pack	m2 per pack	No.per m2	Pack wt max kg
<b>Stamford:</b> 450x450x32	445x445x32	72	15.24	4.73	994
600x600x32	595x595x32	32	11.91	2.69	840
<b>Stamford Ultra:</b> 450x450x32	445x445x32	72	15.24	4.73	994

<b>Tolerances on Working Dimensions</b>	Class 1 tolerances on dimensions, Plan Size $\pm$ 5mm; Thickness $\pm$ 3mm
<b>Tensile Strength</b>	Characteristic bending strength $\geq$ 3.5 Mpa Class 1 / Characteristic breaking load $>$ 3 KN
<b>Abrasion Resistance</b>	No performance declared.
<b>Durability (Freeze Thaw)</b>	Class 3 $\leq$ 1,0kg/m <sup>2</sup> with no individual result $>$ 1,5kg/m <sup>2</sup>
<b>Slip / Skid Resistance</b>	Riven - No performance declared - riven finish.
<b>Thermal Conductivity</b>	1.2 W/(mK)
<b>External Fire Performance</b>	Deemed to satisfy, see commission decision 2000/553/EC
<b>Reaction to Fire</b>	Class A1, see commission decision 2000/605/EC

## Sustainability

<b>BREEAM BES 6001</b>	No rating for 32mm decorative paving flags Responsible Sourcing of Concrete Products (Rating: Excellent)				
<b>Recyclable</b>	100% of this product can be recycled.				
<b>Brett 5-Star Sustainability Rating</b>	=2				
<b>Embodied Carbon</b>					
<b>Nominal Dimensions (mm)</b>	<b>kg CO<sub>2</sub>-eq per m<sup>2</sup></b>				
	<b>32mm</b>	<b>35mm</b>	<b>50mm</b>	<b>65mm</b>	<b>70mm</b>
<b>Stamford</b>					
600x600	16.01	-	-	-	-
450x450	15.44	-	-	-	-
<b>Stamford Ultra</b>					
450x450	15.44	-	-	-	-

## Early Life and Maintenance

Once your paving has been installed, you may notice some changes to its appearance in the first few days and weeks. These visual changes can be due to a number of reasons originating from the concrete and/or the manufacturing or installation method. Many of these will simply weather away, including:

<b>Efflorescence</b>	The ongoing chemical reaction within the concrete which provides its strength can produce calcium carbonate (a white powdery residue) which may appear on the surface of
----------------------	--

	<p>products. This temporarily lightens the product but will typically weather away without reoccurrence.</p>
<p><b>Porosity</b></p>	<p>Concrete continues to cure for many years after manufacture. Whilst this happens and usually during its initial life, a level of porosity may exist where some product retains water, giving a damp appearance. This will diminish as the concrete continues to harden as the product dries out.</p>
<p><b>Aged and distressed products</b></p>	<p>For certain products, we distress the edges to offer an aged appearance and enhance the character of the paving. A dusty residue can be left on the blocks. This will weather away.</p>
<p><b>Differential Curing</b></p>	<p>Dark patches occasionally appear on the surface of concrete products. This may be differential curing and is caused by varying moisture levels within the flag drying at different rates. Like efflorescence, given time and the natural weathering process, these patches will become less visible.</p>