

TEXTURED BLOCK PAVING

LOOKBOOK



PRODUCTS

Invicta & Lugano



INVICTA

- Onyx
- Moonstone
- Pearl
- Citrine



LUGANO

- Graphite Grey
- Misty Grey
- Rosa



PERMEABLE

- Invicta Flow
- Lugano Flow

INVICTA

BLOCK PAVING



ONYX

MOONSTONE

CITRINE

PEARL

7 PLAN SIZES **2** THICKNESSES

CRAFTED FOR EXCELLENCE.

To ensure its long-life structural performance, Invicta's AggTech® surface layer includes more cement, a higher concentration of pigment for richer, more defined tones, and a finer cut of premium, globally sourced, specialist aggregates. Formed in unison to the coarse, robust sub-layer, results in an extremely strong and secure bond for the life of the paving. Its surface layer is extremely hardwearing enabling it to shrug-off extreme weather and retain its vivid, brighter colours.

PLAN SIZES & THICKNESS OPTIONS

Single Size Packs 60* & 80mm



200 x 100mm

Single Size Packs 80mm*



200 x 200mm

Single Size Packs 60 & 80mm*



300 x 100mm

Single Size Packs 80mm



300 x 200mm

Single Size Packs 80mm



600 x 200mm

TRIO 60mm & 80mm** & Single Size Packs 60mm*** & 80mm**



105 x 140mm



140 x 140mm



210 x 140mm

Permeable 60mm & 80mm



200 x 100mm

Our Invicta & Lugano block paving products come in various sizes, offering design flexibility and functionality for both light and heavy traffic. Designed to withstand weathering and deliver long-lasting performance.

*Invicta only

**Lugano only

*** 60mm available in Invicta 210 x 140mm only



ONYX

The rich, deep black hue provides a stunning landscape for endless design possibilities.

The subtle glimmer embedded within each block catches the light beautifully, creating a sophisticated and timeless look in any outdoor space.



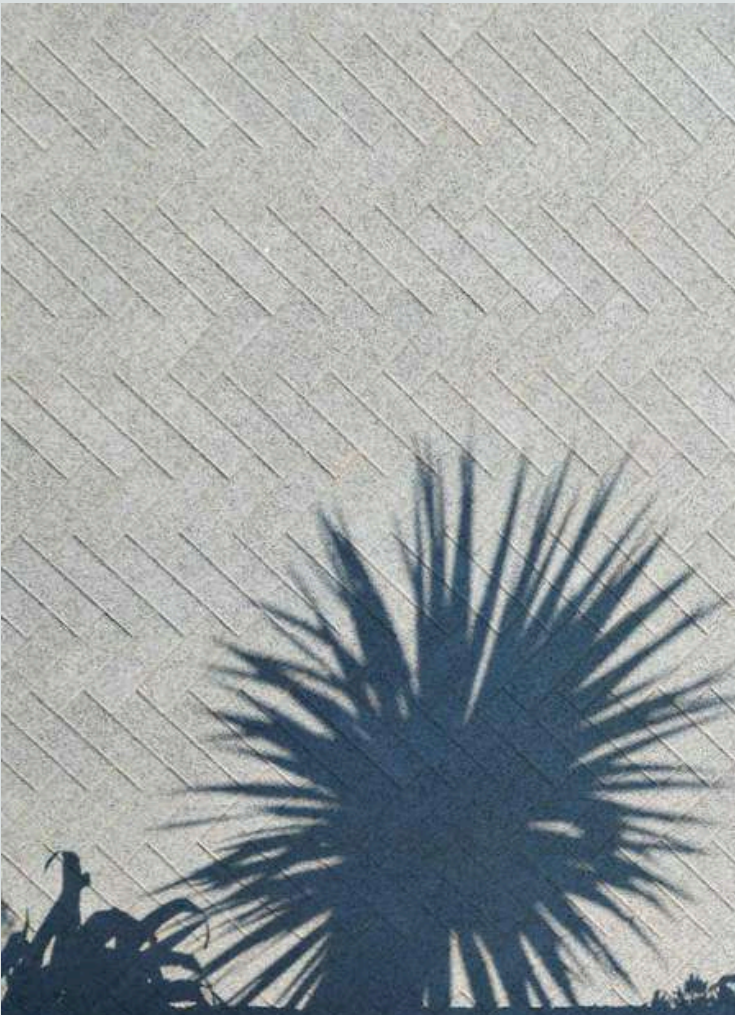


MOONSTONE

A striking silver hue that provides an elegant touch and delicate sparkle to project designs.

Its cool colour seamlessly blends with a variety of environments

The durability of this finish ensures that it will maintain its sophisticated appeal, standing the test of time and trends.



CITRINE

A rich, warm shade to brighten outdoor spaces.

Its golden colouring with hints of black fleck, provides an earthy, textured feel to outdoor spaces. The material is not only visually appealing but also durable, able to withstand all weather conditions while maintaining its charm.





○ PEARL

A flecked, white block paving designed to create a clean, modern feel to domestic and commercial settings.

Its light colour reflects the sunlight, making outside spaces brighter, creating an inviting atmosphere. The neutral shade offers versatility in design, allowing for seamless integration into various settings.



MIX AND MATCH
BE BOLD



Invicta's colour palette is designed to integrate, creating eye-catching, unique designs across driveways and commercial settings such as high streets, leisure centres and retail.

LUGANO

B L O C K P A V I N G



GRAPHITE GREY

MISTY GREY

ROSA

7 PLAN SIZES **2** THICKNESSES

PREMIUM, GRANITE EFFECT.

Lugano showcases the beauty of natural granite and is available in three refreshing colours. Whether used individually or combined, they form stylish & durable urban environments, while Rosa adds a touch of colour into the design. Lugano's hard-wearing, textured surface provides a high level of slip resistance, making it ideal for applications where the aesthetic of natural granite is required but at a more affordable price.



GRAPHITE GREY

A lightly textured, dark grey shade for enhancing contemporary settings or adding contrast to traditional homes.

This timeless hue seamlessly integrates with a wide range of design aesthetics, offering a stylish foundation for any outdoor space.





MISTY GREY

A lightly textured, silver-grey hue for a seamless landscape design.

Enhance the beauty of outdoor spaces with a subtle silver-grey tone that complements various landscapes.

Its classic colour provides a neutral backdrop to highlight architectural features and landscaping elements.





● ROSA

Enhancing outdoor areas with a vibrant rose hue for a touch of elegance and charm.

It creates functional and chic spaces that exude a modern and trendy feel. Either stand out with a bold statement design or combine the Rosa with other Lugano colours for a one-of-a-kind design aesthetic and a pop of colour.



PERMEABLE PAVING



Permeable paving is an eco-friendly, sustainable and durable solution for protecting your commercial area from flooding or pooling water, by providing a sustainable water drainage system. Our permeable paving allows water to soak through the surface, releasing it into the ground

Our 'Flow' paving ranges are an ideal solution for trafficable pavement which includes driveways, patios and pavements through to car parking areas, adoptable carriageways and heavy duty commercial applications.

INVICTA FLOW

PERMEABLE BLOCK PAVING



ONYX

MOONSTONE

CITRINE

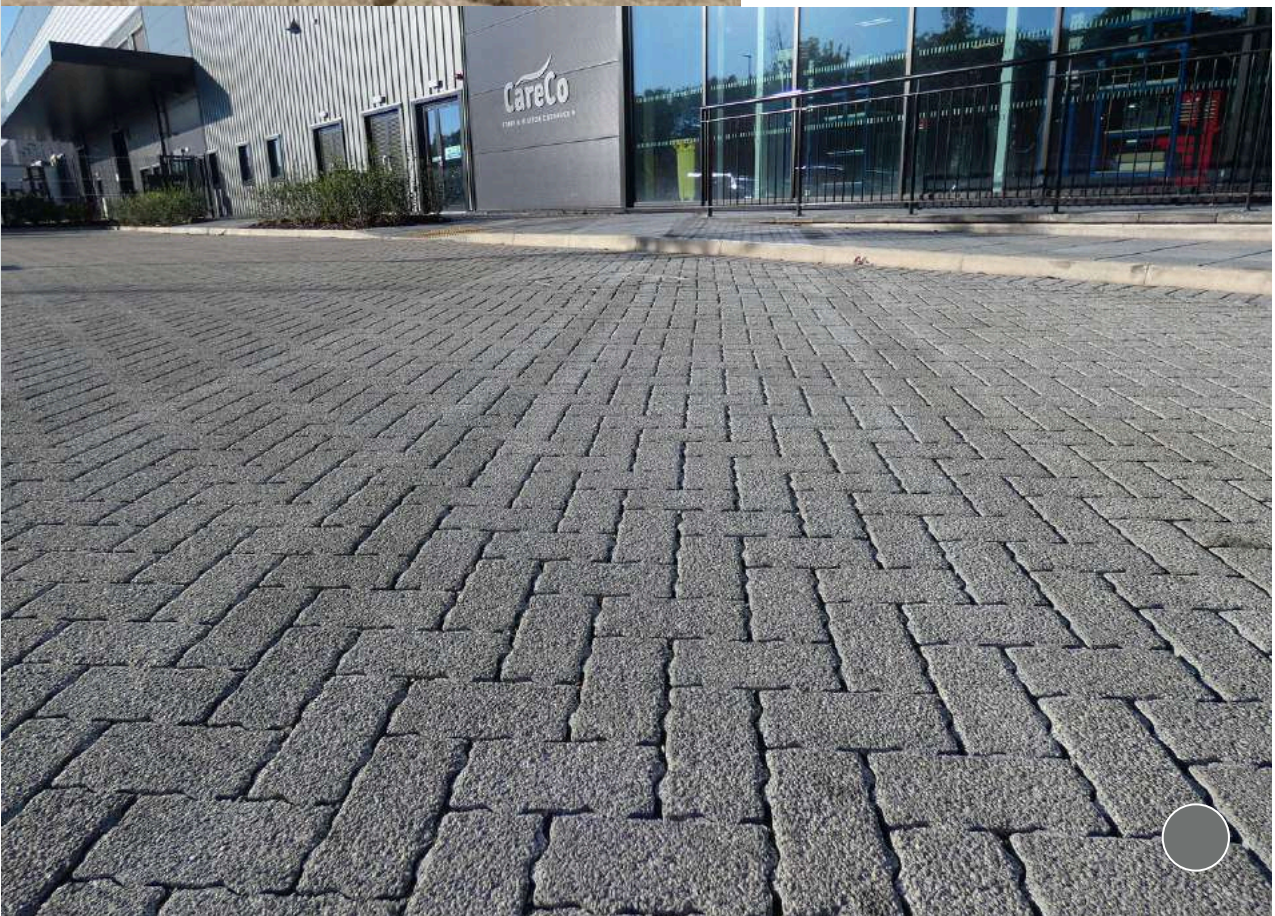
PEARL

- ① PLAN SIZE
- ② THICKNESSES

PLATINUM, PERMEABLE PAVING

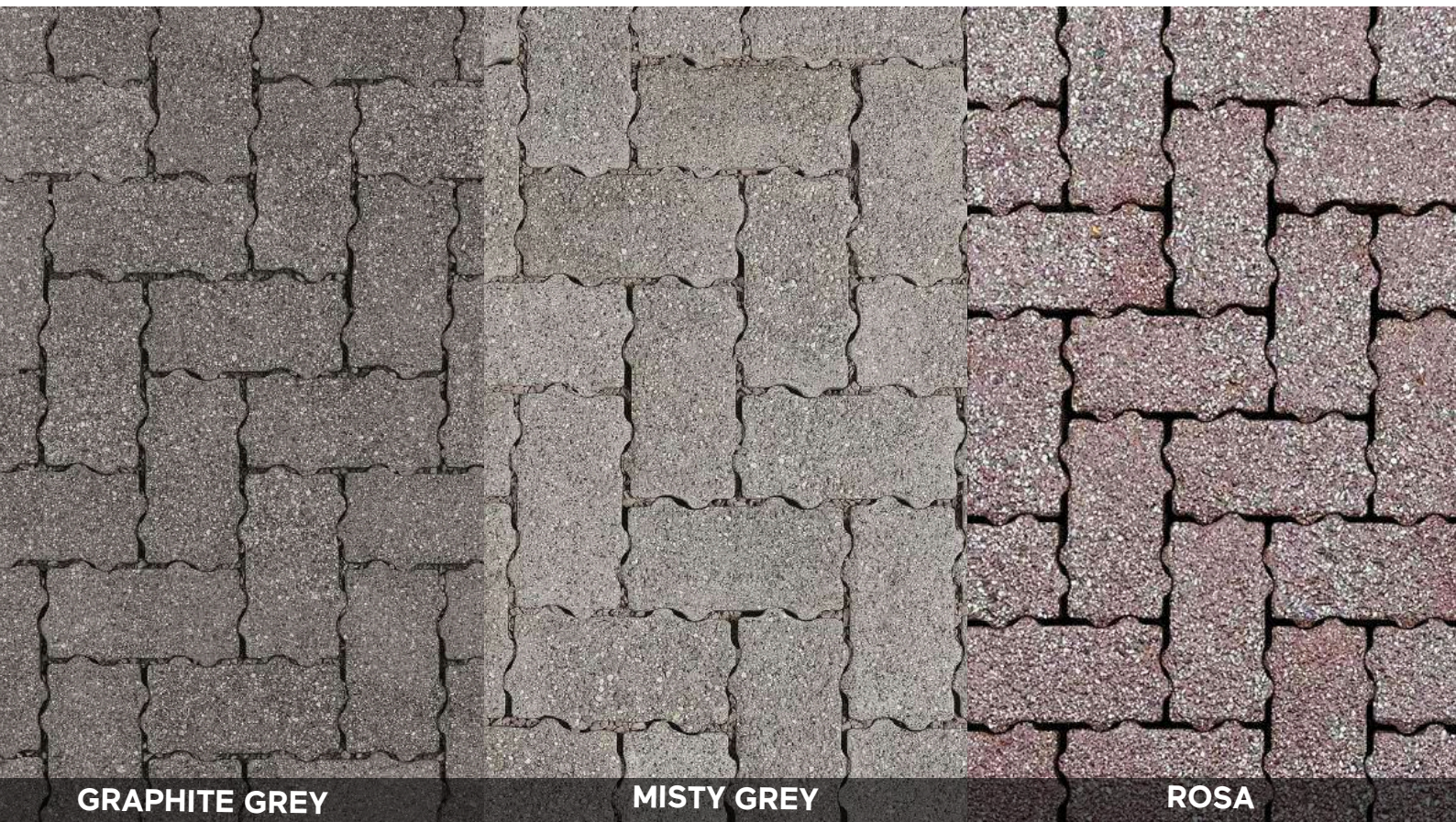
Our platinum, granite paving, Invicta Flow has a unique nib design and features a pioneering AggTech® surface layer formed of premium granite aggregates. Designed with sustainability in mind, Invicta Flow permeable paving delivers a sparkling, high-performance solution for your project. Invicta Flow is the perfect choice to help avoid everyday flooding and excess surface water by releasing it back into the environment in a controlled, sustainable way.

INVICTA FLOW



LUGANO FLOW

PERMEABLE BLOCK PAVING



GRAPHITE GREY

MISTY GREY

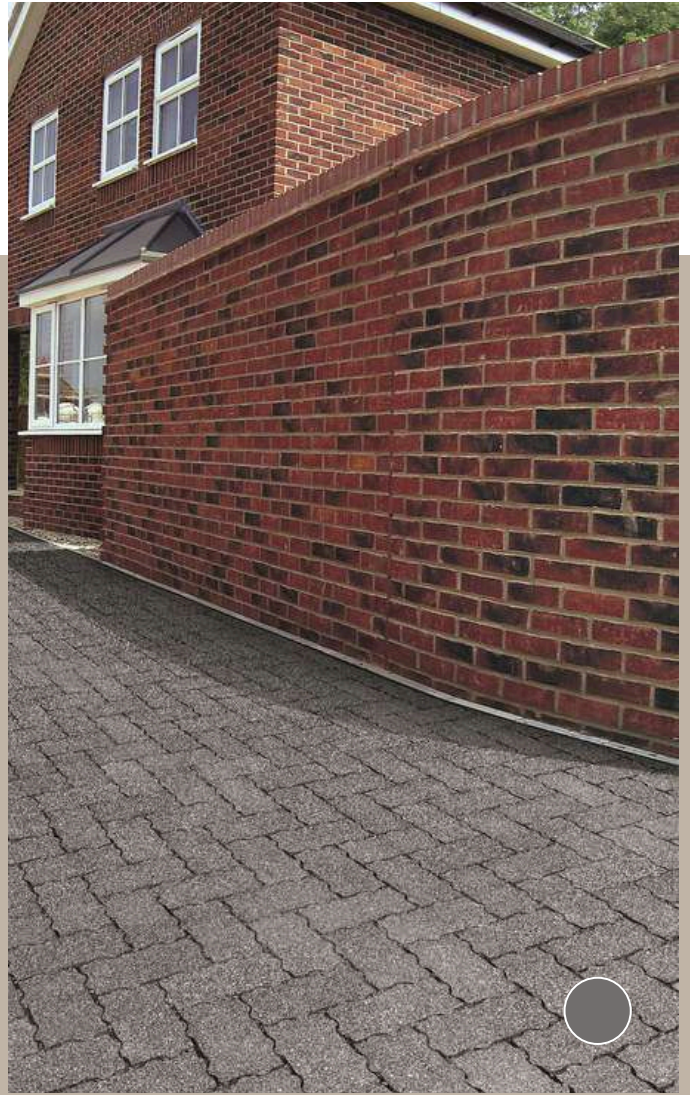
ROSA

- 1 PLAN SIZE
- 2 THICKNESSES

SUSTAINABLE, GRANITE PAVING

Designed to give landscapes the look and feel of natural granite, Lugano Flow's surface layer features beautiful flecks resembling the shine of silver whilst also providing a high level of slip resistance. Alongside its distinctive textures and tones, Lugano Flow features a unique nib design that allows surface water to drain between the blocks, making Lugano Flow a sustainable drainage system.

LUGANO FLOW



EXPLORE THE POSSIBILITIES.



CONTACT US FOR A PROJECT CONSULTATION.

Our products are durable, flexible, and stylish, making them a perfect choice for any commercial project. Whether you're looking to create a modern, traditional, or bespoke design, our team is here to help you every step of the way. We are proud to be the leading paving manufacturer in the UK and we look forward to partnering with you to bring your paving projects to life.



projectdesigner@brett.co.uk