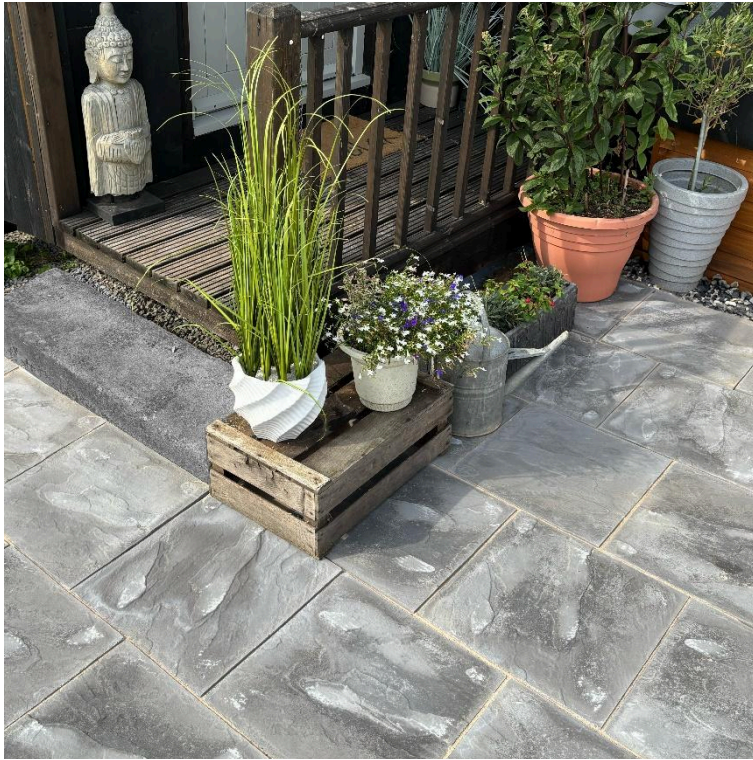


Broadway Economy Concrete Flag Paving

Technical Data Sheet



Charcoal Riven



Buff Riven



Buff Smooth



Natural Riven



Natural Smooth



Charcoal Riven

Description

Brett Broadway Economy paving is a modular, wet-pressed paving flag, and is available in a riven and smooth finish and in a range of colours.

Application

Broadway Economy is ideally suited to utility areas in domestic applications. Not suitable for driveways.

Product Type	Riven or smooth precast concrete modular paving flag.
Manufacturing Process	Hydraulically pressed concrete paving flag.
Manufacturing Standard	BS EN 1339: 2003
Design Standard	BS 7533-101: 2021
Installation Standard	BS 7533-102: 2025
UKCA/DOP	Contact Brett for more information
NBS Specification	-

Product Performance

Nominal Dimensions (mm)	Working Dimensions (mm)	No.per pack	m2 per pack	No.per m2	Pack wt max kg
Riven					
600x600x32	597x597x32	30	11.16	2.69	840
450x450x32	447x447x32	60	12.7	4.73	925
Smooth					
600x600x32	597x597x32	30	11.16	2.69	840
450x450x32	447x447x32	60	12.7	4.73	925

Tolerances on Working Dimensions	Class 2 tolerances on dimensions, Plan Size \pm 2mm; Thickness \pm 3mm
Bending Strength	Characteristic bending strength \geq 3.5 Mpa Class 1; Characteristic breaking load $>$ 3 kN
Abrasion Resistance	Class 4 - \leq 20mm - Determined by Wide Wheel Abrasion Test
Durability (Freeze Thaw)	Class 3 \leq 1,0kg/m ² with no individual result $>$ 1,5kg/m ²
Slip / Skid Resistance	PTV Unpolished Slip Resistance Value \geq 55 - Potential for slip - Low
Thermal Conductivity	1.2 W/(mK)
Reaction to Fire	Class A1, see commission decision 2000/605/EC
External Fire Performance	Deemed to satisfy, see commission decision 2000/553/EC

Sustainability

BREEAM	No rating for 32mm decorative paving flags
BES 6001	Responsible Sourcing of Concrete Products (Rating: Excellent)
Recyclable	100% of this product can be recycled.
Brett 5-Star Sustainability Rating	=3

Nominal Dimensions (mm)	kg CO ₂ -eq per m ²				
	32mm	35mm	50mm	65mm	70mm
600x600	10.90	-	-	-	-
450x450	10.60	-	-	-	-

Early Life and Maintenance

Once your paving has been installed, you may notice some changes to its appearance in the first few days and weeks. These visual changes can be due to several reasons originating from the concrete and/or the manufacturing or installation method. Many of these will simply weather away, including:

Efflorescence	The ongoing chemical reaction within the concrete which provides its strength can
----------------------	---

	<p>produce calcium carbonate (a white powdery residue) which may appear on the surface of products. This temporarily lightens the product but will typically weather away without reoccurrence.</p>
<p>Porosity</p>	<p>Concrete continues to cure for many years after manufacture. Whilst this happens and usually during its initial life, a level of porosity may exist where some product retains water, giving a damp appearance. This will diminish as the concrete continues to harden as the product dries out.</p>
<p>Aged and distressed products</p>	<p>For certain products, we distress the edges to offer an aged appearance and enhance the character of the paving. A dusty residue can be left on the blocks. This will weather away.</p>
<p>Differential Curing</p>	<p>Dark patches occasionally appear on the surface of concrete products. This may be differential curing and is caused by varying moisture levels within the flag drying at different rates. Like efflorescence, given time and the natural weathering process, these patches will become less visible.</p>