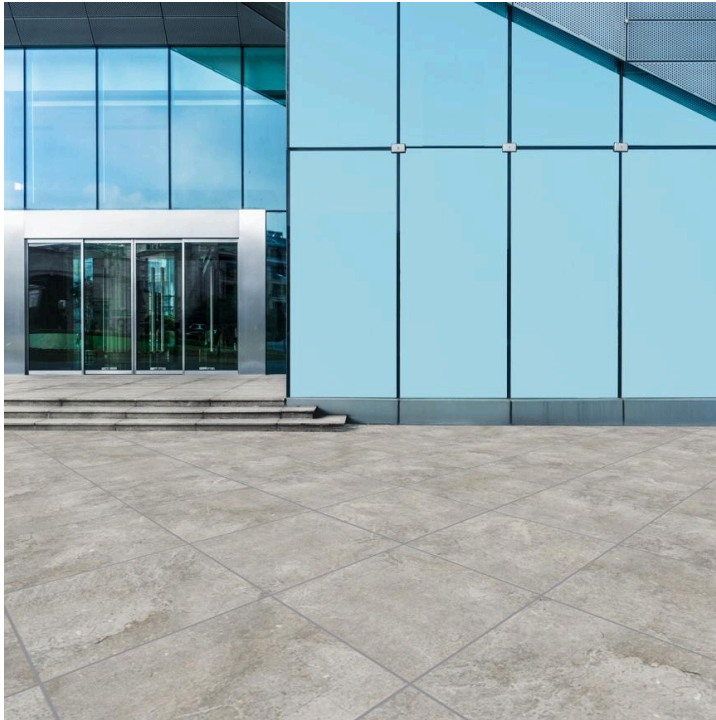
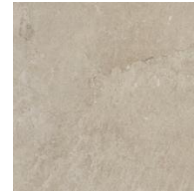


GeoCeramica® 40mm Porcelain Paving Technical Data Sheet



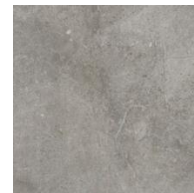
Baltico Beige



Baltico Beige



Baltico Grey Punch



Baltico Light Grey



Impasto Noir



Fiordi Fumo



Fiordi Grigio



Fiordi Sand

Description

Brett GeoCeramica® offers hybrid porcelain and concrete paving flags that blend modern elegance with timeless appeal. The Baltico range features a soft, weathered stone look in Beige, Light Grey, and Grey Punch, while the Impasto range mimics the luxurious appearance of traditional Belgian Blue Limestone, complete with natural veins, lines, and patterns, and the Fiordi range has a textured, variegated surface inspired by natural sandstone.

Application

GeoCeramica® Baltico, Fiordi and Impasto Porcelain is designed for patio applications only. Not suitable for driveways.

Product Type

Dry-pressed ceramic tiles, with a pre-bonded cementitious water permeable drainage layer.

Manufacturing Process

Porcelain pre-bonded to no-fines concrete base.

Manufacturing Standard	BS EN 1339: 2003, BS EN 12004: 2008, BS EN 1348: 2007 & BS EN 1389-2: 2003
Design Standard	BS 7533-101: 2021
Installation Standard	BS 7533-102: 2025
UKCA/DOP	Contact Brett for more information
NBS Specification	-

Product Performance

Nominal Dimensions (mm)	Working Dimensions (mm)	No. per pack	m2 per pack	No. per m2	Pack wt max kg
600x600x40	598x598x40	28	10.08	2.77	882

Tolerances	Thickness \pm 2mm Plan Size \pm 3mm
Bending Strength	Characteristic bending strength \geq 5.0 Mpa / Characteristic breaking load $>$ 4.5 KN
Layered Adhesion	\geq 0.5 N/mm ² - Initial, after water saturation, after heat load
Layer Adhesion Freeze Thaw	\geq 0.3 N/mm ² - After freeze-thaw load
Durability	Pass - Internal & External Freeze Thaw resistance
Slip / Skid Resistance	$>$ 36 (36+ Low Slipping Risk) R values are not recognised in the UK but are available on request
External Fire Performance	Deemed to satisfy, see commission decision 2000/553/EC
Water absorption	Eb \leq 0.5%

Sustainability

BREEAM	Contact Brett for more information
BES 6001	Contact Brett for more information
Recyclable	Contact Brett for more information
Embodied Carbon	Contact Brett for more information
Brett 5-Star Sustainability Rating	-

Early Life and Maintenance

Once your paving has been installed, you may notice some changes to its appearance in the first few days and weeks. These visual changes can be due to a number of reasons originating from the concrete and/or the manufacturing or installation method.

Contact Brett for more information.